



DUNE

TULUM

BY

Home 2 B





DUNE

«DUNE» combines beautiful Contemporary design and high end finishes. A little jewel hidden between the jungle and the breathtaking beaches of Tulum .

It contains 6 apartments , spacious pool area , lots of palm trees, fully equipped kitchens , inventor A/C's and laundry area.

The roof top terrace has a spacious private cooking aria , sitting aria and glass side pool with beautiful finishes and shade from the hot Caribbean sun, overlooking the main pool and the jungle.



LOCATION

DUNE" it's a new luxurious development in the heart of Tulum, «La Veleta» area, located only few blocks away from Kukulcan Av., the newest beach access road, and few blocks away from Aldea Zamá makes it the perfect place for enjoy the life in the Riviera Maya.

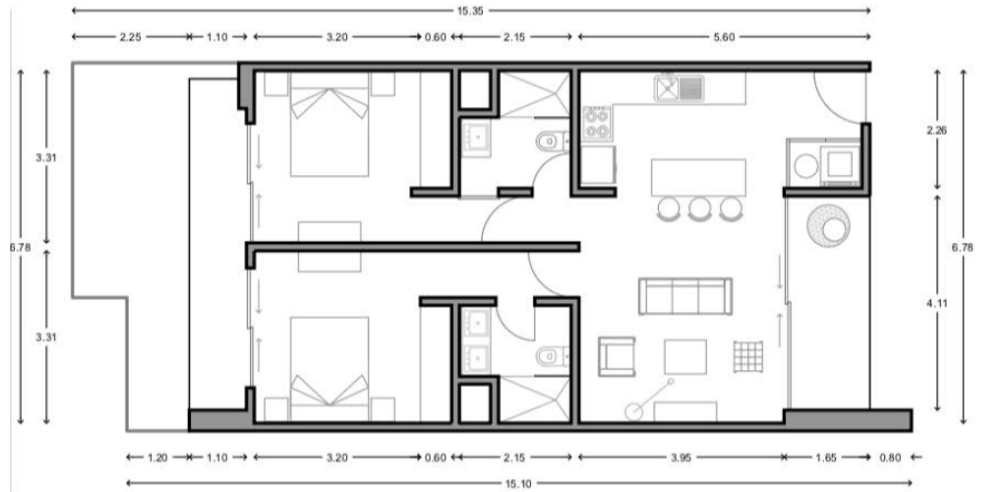
Nowadays «La Veleta» has the best prices of the market and count with an excellent capital gain, allowing at the same time to the inhabitant to have a privileged life style, in a first level area and enjoying the security of a residential zone



UNIT 2

104.75 SQM

- 2 BEDROOMS
- 2 BATHROOMS
- KITCHEN
- LAUNDRY AREA
- TERRACE
- GARDEN



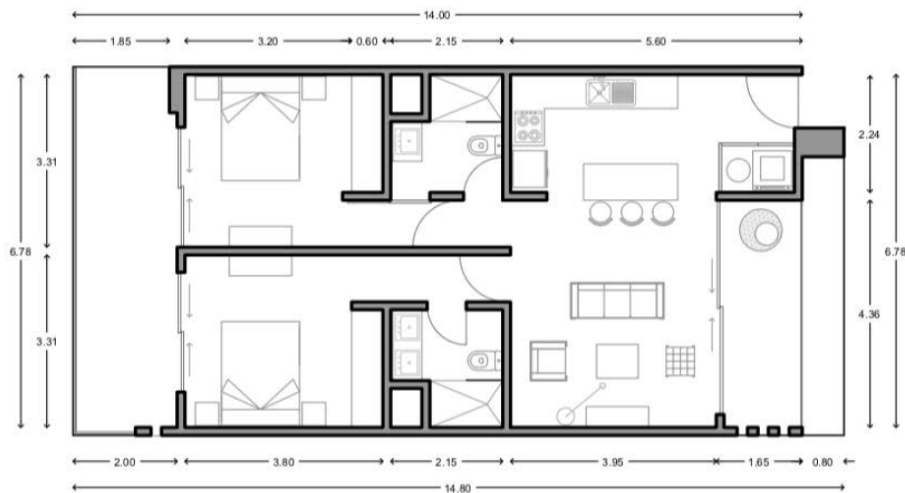




UNIT 4

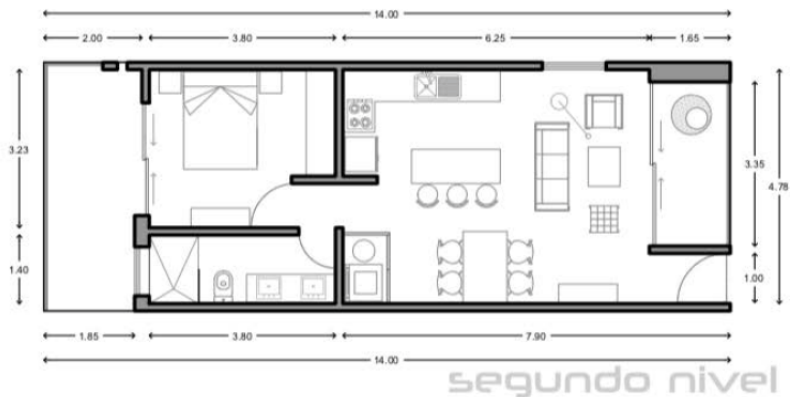
103.40 SQM

- 2 BEDROOMS
- 2 BATHROOMS
- KITCHEN
- LAUNDRY AREA
- 2 BALCONIES









UNIT 5 110.85 SQM

- 1 BEDROOM
- 1 BATHROOM
- KITCHEN
- LAUNDRY AREA
- 2 BALCONIES

ROOF TOP

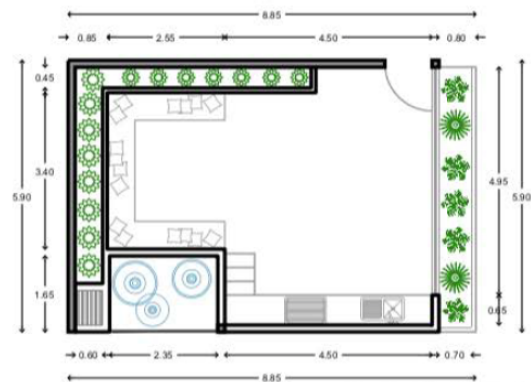
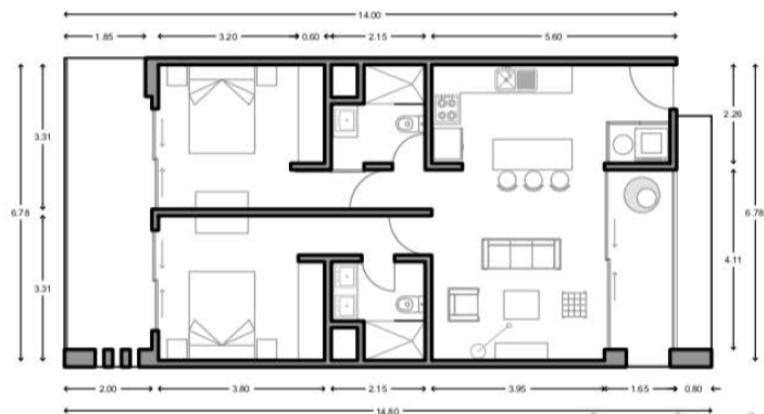
- KITCHEN
- POOL
- LIVING

UNIT 6 155.81 SQM

- 2 BEDROOMS
- 2 BATHROOMS
- KITCHEN
- LAUNDRY AREA
- 2 BALCONIES

ROOF TOP

- KITCHEN
- POOL
- LIVING













DUNE

TULUM

BY
Home 2B